

Treated Squares can be used for fence posts, walkways, patios, decks or retaining walls. 4"X4" & 6"X6"

Privacy Fence is a complete package of treated posts, stringers and boards. Call for more information.



Privacy Fence

Board Fences can be made with 4"X4" or 6"X6" posts and 1"X4", 1"X6" or 1"X8" horizontals or 2"X4", 2"X6" or 2"X8" horizontals, depending on your preference.



Hitching Post

Hitching Post has massive ends & rail with 8' posts—so you can set them DEEP.

Colored Landscape Mulch comes in red & brown and is used as decorative ground cover in garden areas. The colorants are 100% natural.

Lumber - We now have rough sawn boards as well as finish and pattern lumber. Come check out the blue stain tongue & groove, log siding and more!

Custom Round Wood Products - please contact us with your special project needs.

Firewood is available in split blocks, random length bundles or from sawmill slabs.



As part of our integrated forestry business, we manufacture these products for you.

Western Rail Fence / Security Fence

Splits / Field Posts / Barn Poles / Gates

Hitching Posts / Privacy Fence / Firewood

Landscape Squares / Rough Sawn Lumber

Finish & Pattern Lumber / Specialty Beams

Colored Landscape Mulch / Edged Slabs

Bedding / Peelings / Forestry Services

Custom Round Wood Products for Detailing

that 'Log Home' Look

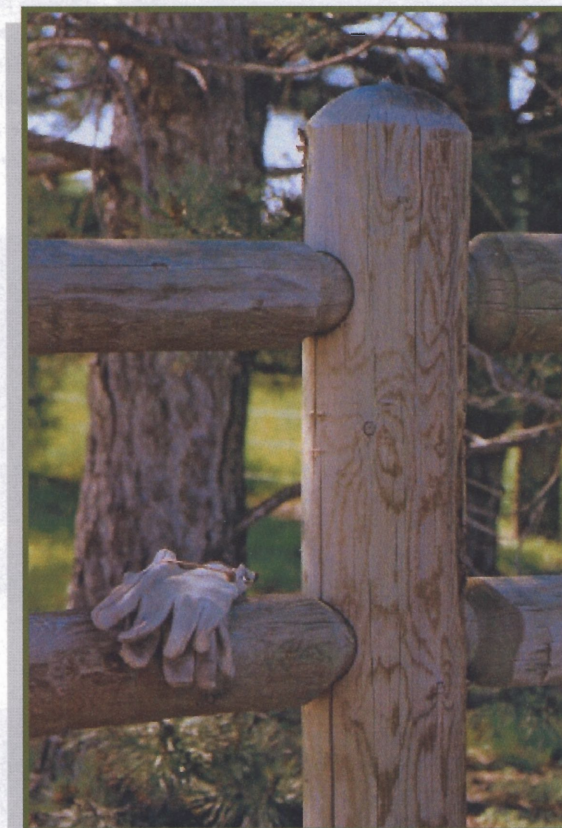


Check out our other specialty brochures;
Fence / Landscape
Livestock / Lumber
Specialty Log Accents
Forestry Services

Call us at 970-484-4065
or 970-224-3877 or come
by our retail yard at
2532 W. County Rd. 54G
Fort Collins, CO 80524
mtpksm@hotmail.com

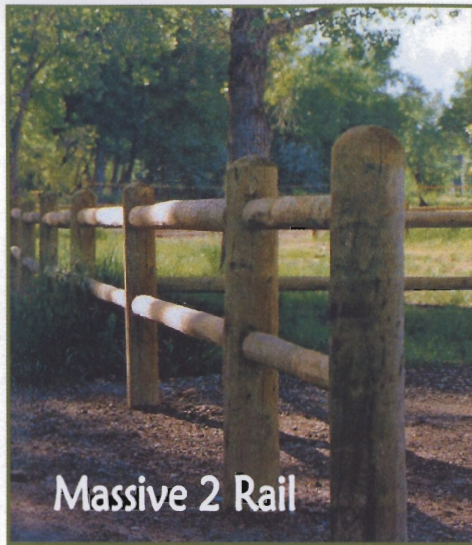


Quality, service & value come first.



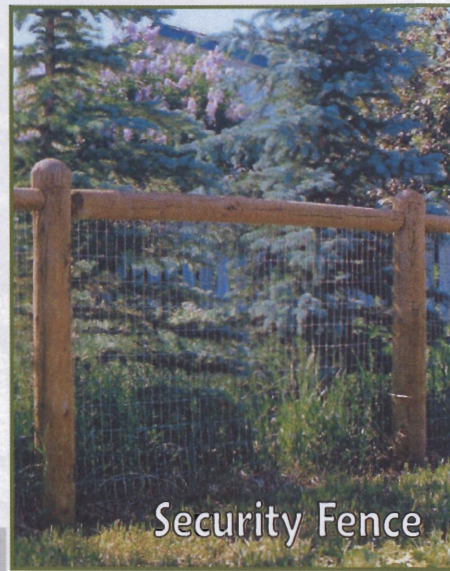
FENCE

With over 32 years of experience,
we have invested in the latest technology
to get you the highest quality product,
SOMETHING YOU CAN BE PROUD OF!



Massive 2 Rail

Western Rail Fence is drilled and dowelled tenon joint fence. It is available in massive and standard sizes and 2, 3 and 4 rail fencing. We also make all the gates you'll need to complete your fencing projects. Our 2 rail fence is made on 5' posts, 3 rail is made on 6 1/2' posts and 4 rail is made on 8' posts, with the rails spaced at 15" on center. A.C.Q. treat.

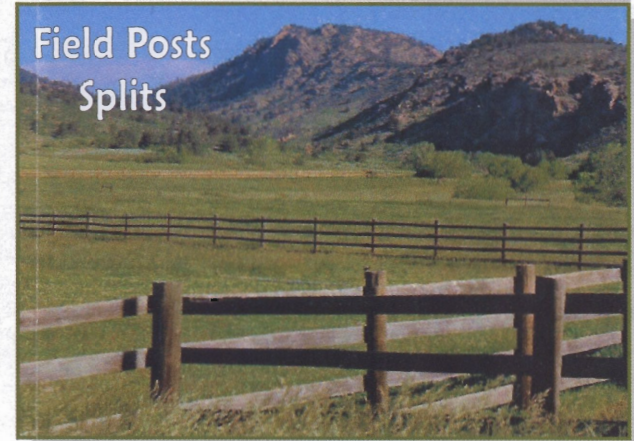


Security Fence

Gates are made to match all of our Western Rail Fence styles and heights in 4', 6' & 8' widths. Longer spans will be high-back gates. We also carry the hardware necessary to hang these gates.

Security Fence is made on a 6"- 7" (sm. end dia.) post and comes in 6 1/2' & 8' lengths, with a top rail and wire fence in 42" or 60" heights. A.C.Q.

Splits are 4" (sm. end dia.) and 8' long. They are cut in half lengthwise. A.C.Q.



Field Posts
Splits

Field Posts are C.C.A. or A.C.Q. treated and come in 8' & 6 1/2' lengths and 3" to 7" small end diameters.

Corral Poles are 16' long. 'Smalls' (peeled) run from 2"- 2.75" in diameter. 'Mediums' (peeled) run from 2.75"- 3.5" in diameter. 'Larges' (peeled) run from 3.5" up to 4.25" in diameter. And 'X-Large' (peeled) are 4.25" to 4.75". They are sold in bundles of 20.



Massive 3 Rail & Gates

Massive Western Rail Fence

is made with 7"- 8" (small end diameter) posts and 4"- 5" (sm. end dia.) rails, with a 3 1/2" tenon. It is available in 2, 3 & 4 rail styles.

Standard Western Rail Fence

is made with 5"- 6" (sm. end dia.) posts and 3"- 4" (sm. end dia.) rails, with a 2 1/2" tenon. It is also available in 2, 3 & 4 rail styles.

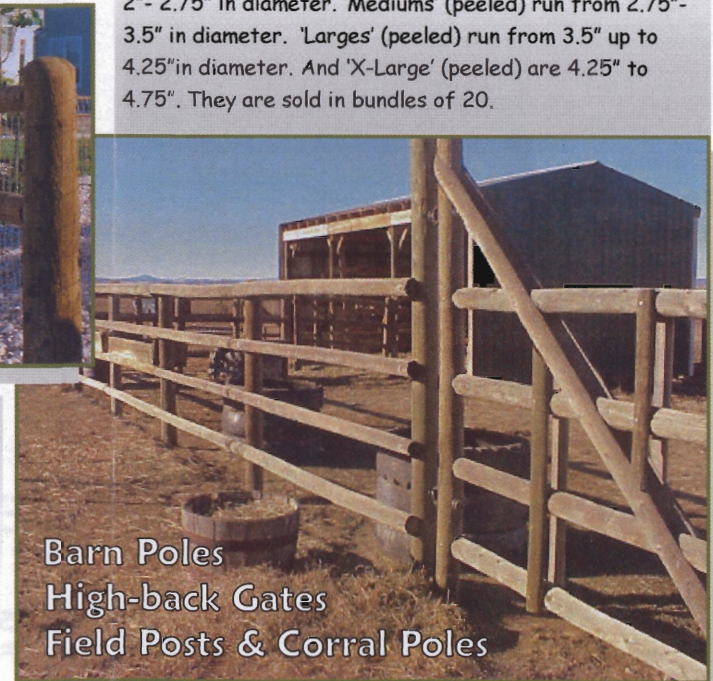


Standard 2 Rail



Standard 3 Rail

Barn Poles are available in 10', 12', & 16' lengths and 5", 6" or 7" diameters. A.C.Q. treat.



Barn Poles
High-back Gates
Field Posts & Corral Poles